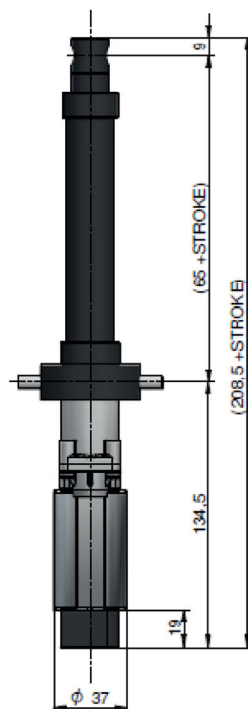
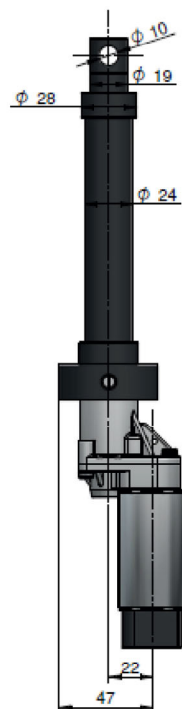
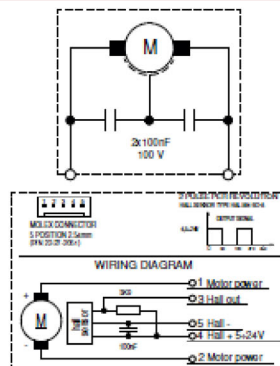
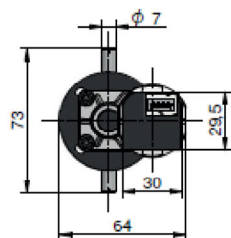


Microwin with Encoder



TECHNICAL DATA

DESCRIPTION	VALUE	VALUE
Supply voltage (VDC)	12	24
Stroke (mm)	50÷300	
No load speed (mm/s)	2,7÷20	5÷40
Max load (N)	1600	2100
Gear Ratio	1:12, 1:50	
Spindle nut Material	POM	
Trapezoidal screw	TP10x3	
Duty Type	S1, S2, S3	
Pulses/revolution Hall sensor on motor shaft	2	
Weight (kg)	< 0,7	



DOWNLOAD
MICROWIN WITH ENCODER
TECHNICAL SKETCH